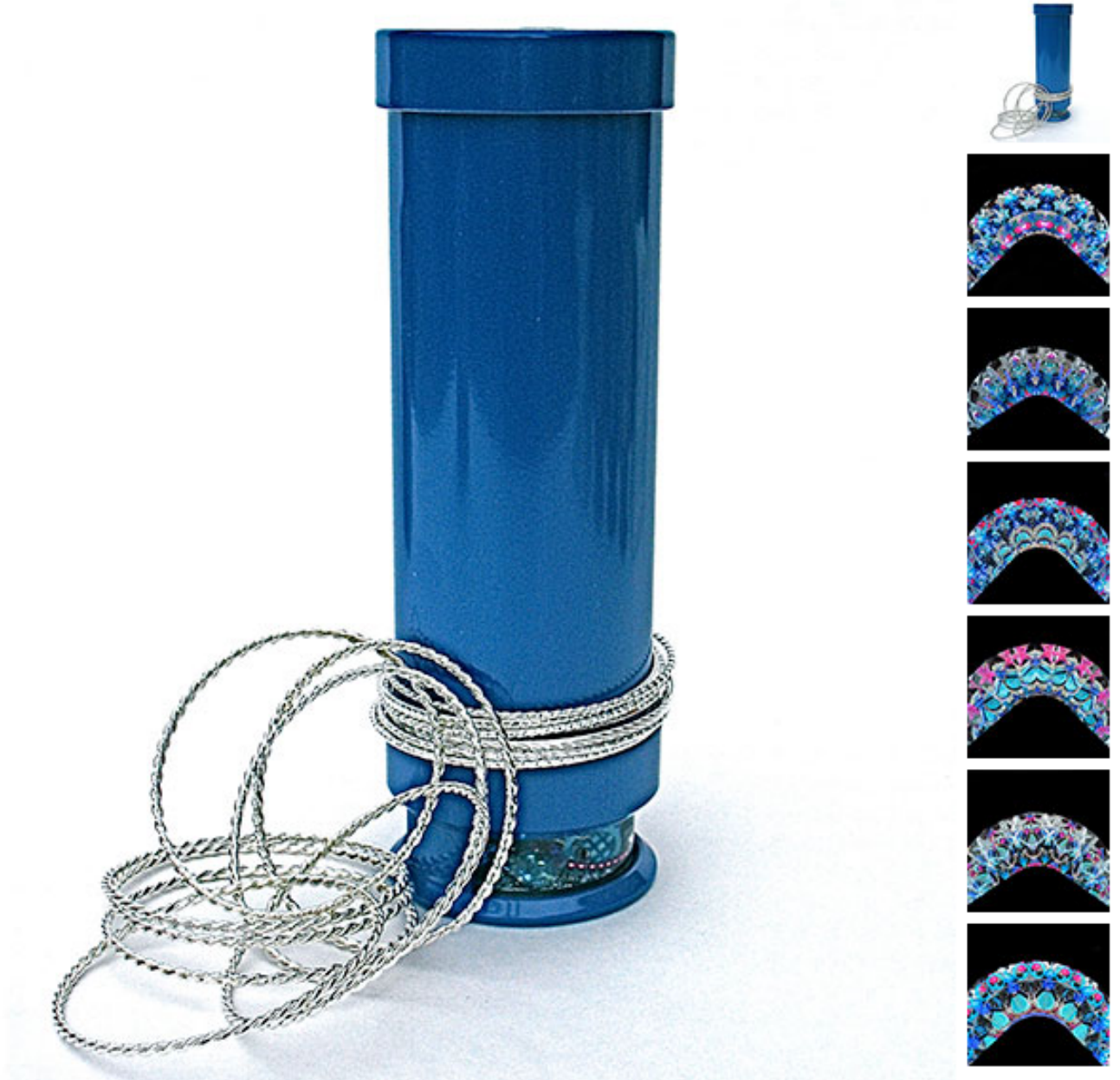


## crescent moon



The sparkle and mystery of a crescent moon in a dark night sky is captured in this special scope with its arch shaped mirror system. Deep blue, silver, turquoise and hot pink stars and moons tumble thru the unique mirror arrangement. The exterior has a cobalt blue powder coat enhanced with silver bracelets. The liquid filled cell has crystals, beads, lampworking, and art glass.

First surface mirror. Eyepiece fitted with a 3 diopter glass magnifying lens. Size approximate: 8 1/4" x 2 3/4".

Designed and made by award winning scope artist Judith Paul, known for her themed kaleidoscopes - a collector quality art form.