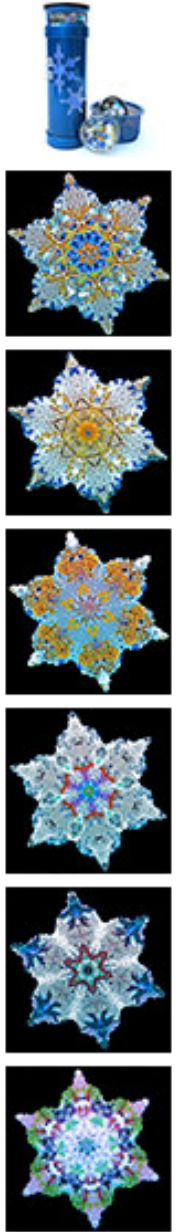


snowing



This is the 2nd in a new series of Christmas scopes (see "lit from Within") by Judith Paul. The scope parts are double powder coated - first in silver and then in a rich transparent blue. The deep sparkling finish is enhanced with 2 offset snowflakes, each cut from custom dichroic glass. The snowflakes are fire polished and slumped to fit the wall of the scope and the effect is dazzling. The mirrors have been altered to make snowflake patterns out of every turn of the liquid filled cells. 1 cell represents a snowfall at night (side lit) and the other a snowfall in the day (transparent back lit). Each cell is filled with snowflakes, crystals, dichroic glass, glass cane and lampworking - and more snowflakes. This really has to be see to be appreciated. A small matching powder coated basket accompanies - to hold all the extra cells you will want.

2 mirror altered 6 point star. 3 diopter glass magnifying lens. Size approx.: 8 1/2" x 2 3/4". Basket approx. 3" across.